



# Jewish Family Service



*Moving Forward Together*

Annual Report 2017-18





In 1918, a group of 16 women formed an unlikely partnership. They united four Jewish women's groups – Hebrew Sisterhood, Jolly Sewing Circle, Junior Charity League, and the Ladies Hebrew Aid Society – and pooled their resources for the greater good.

Together, these 16 women laid the foundation for Jewish Family Service, which today is one of San Diego's most impactful human services agencies – providing resources and support to more than 20,000 children, families, and older adults each year.



## Celebrating 100 Years of Life-Changing Service in San Diego



To mark the start of a new century of service, JFS launched a \$50 Million Centennial Countdown Campaign, kicked off with a \$25 million commitment from the Rady Family Foundation.



In celebration of our Centennial year, February 26, 2018, was proclaimed as Jewish Family Service 100th Anniversary Day by the City of San Diego!



At our 2018 Heart & Soul Centennial Gala, more than 600 friends gathered to honor the extraordinary women who have helped to build, grow, and develop JFS over a century of life-changing service in San Diego.





# Jewish Family Service



Dear Friends,

Throughout our 100-year history, Jewish Family Service has leveraged the strength of the community to help people transform their lives.

As we embarked on a new century of service in 2018, our focus remained firmly fixed on the future. We recommitted ourselves to deliver impactful services that embody our Jewish values and empower San Diegans to build more stable, secure, and connected lives. And in responding to complex policy changes and issues within our community, we found new avenues for partnership and deeper ways to serve.

Over the last year, JFS helped launch the San Diego Rapid Response Network to meet the needs of vulnerable immigrants and asylum-seekers throughout our region. With funding from the City of San Diego and private philanthropy, we increased the capacity of the Safe Parking Program to help San Diegans transition from homelessness to permanent housing. And through the JFS Alzheimer's Disease Initiative, we connected hundreds of older adults to a specialized network of care and support and trained our professionals on the best practices in caring for people with Alzheimer's and related dementias.

Like the visionary founders, philanthropists, and leaders who came before us, we will continue to meet the evolving needs of our community with compassion, resourcefulness, and resolve. We will adapt to an increasingly complex world with heart and innovation.

We know that none of this – our longevity, our programs and services, our impact – would be possible without your support. This report is a testament to your generosity, compassion, and inspiring commitment to building and strengthening our community.

Together, we are creating a San Diego we can be proud to call our home.

In gratitude,

Marie G. Raftery  
Chair, Board of Directors

Michael Hopkins, MSW  
Chief Executive Officer



# The JFS Approach

When people turn to JFS, it's often with an urgent need like food, transportation, or housing. Others seek assistance for an aging parent or new networks of support. We start by helping people access the resources to stabilize their situation. Then, we work together to create a plan.

With an approach rooted in supportive personal relationships and strong community partnerships, we deliver services that foster the health, skills, confidence, and resilience of every person we serve. With time and hard work, our clients build a foundation of economic stability, personal wellbeing, and community connection that empowers them to thrive.

**By working together to uplift individuals and families, we strengthen the whole community.**

## Moving Forward *Together*



## Economic Stability

The ability to meet basic needs, obtain an education, secure steady employment, and plan for the future.



## Personal Wellbeing

The health, skills, confidence, and resilience to overcome challenges and achieve future goals.



## Community Connection

The opportunity to live engaged, socially connected lives – and be a part of a supportive community.





## **STANDING TOGETHER AGAINST HATE**

More than 2,000 people gathered for an interfaith vigil following the horrific attack on the Tree of Life Synagogue in Pittsburgh. While we drew together in mourning, we emerged with solidarity, compassion, and hope. United as a community, we stand against hate.



## **TRUNK OR TREATING**

On Halloween night, JFS staff surprised families in the Safe Parking Program with costumes, decorations, and candy – and we all went “trunk or treating” together.

# This is What Community



## **UNDERSTANDING U.S. IMMIGRATION TODAY**

In the summer of 2018, Friends of the Family supporters traveled with JFS leadership and members of the San Diego Rapid Response Network to tour migrant shelters in Tijuana, Mexico.



## **ELIMINATING STIGMA**

Our 2018 Behavioral Health Committee Luncheon featured author and performer Judy Batalion, who shared her personal account of hoarding, healing, and the effects of the Holocaust on four generations of women in her family.



## ENGAGING YOUNG ADULTS

During National Domestic Violence Awareness month, Emerging Leaders at JFS hosted a dinnertime service project, collecting 3,000+ baby wipes and organizing 48 care packages for families impacted by domestic violence.



## BRINGING HOPE TO THE TABLE

JFS Board Member Kira Finkenberg celebrated her birthday by providing dinner and gas cards for families in the Safe Parking Program.

# Looks Like



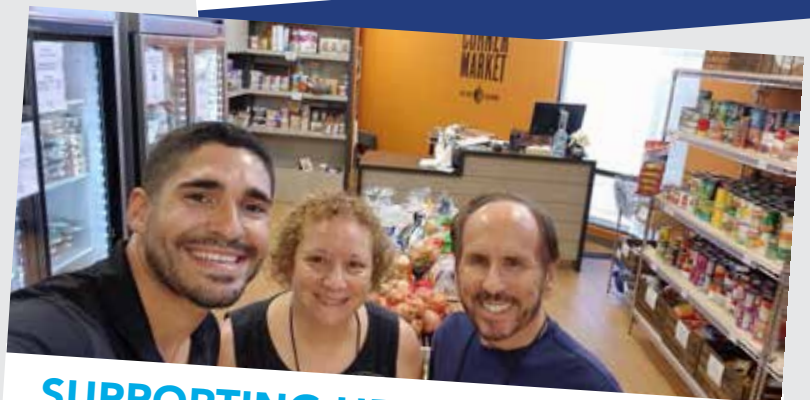
## EMBRACING FAMILIES

With incredible support from individual and corporate donors, we were able to embrace more than 600 individuals and families with gifts this holiday season.



## HELPING TEENS USE THEIR VOICES FOR GOOD

In partnership with the San Diego Jewish Teen Initiative, JFS hosted Your Voice Teen Activism Conference featuring keynote addresses from Congresswoman Susan Davis and San Diego City Council President Pro Tem Barbara Bry.



## SUPPORTING HEALTHY FAMILIES

Over the past year, Corner Market volunteers helped bring dignified food assistance to more than 900 San Diego households per month.



**"Everything I do, I do for my family. My parents have always worked hard to support us. I want them to be able to retire—to no longer have to struggle."**

**– Alan**

**Alan has called San Diego home since before he can remember. He worked his way through school and became the first in his family to graduate college. Newly married, Alan dreams of raising a family and owning his own business someday.**

We first met Alan in early 2018. Our Immigration Services team was partnering with the American Civil Liberties Union (ACLU) to host a free workshop for Deferred Action for Childhood Arrivals (DACA) recipients looking to renew their applications. Alan was the first person to arrive. In the past, he and his family had payed thousands of dollars in legal fees for assistance filing immigration paperwork. At JFS, he found quality help for free. He was so grateful, he stayed to volunteer.

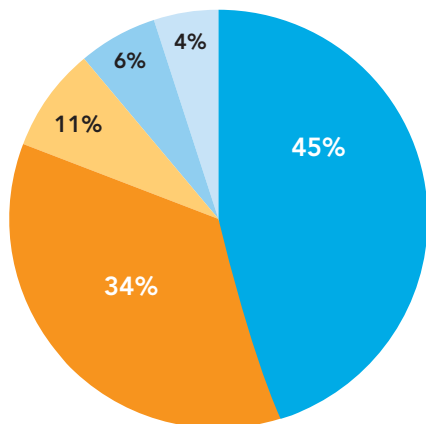
---

**Over the past year, public and private funding has helped 1,059 people apply for immigration benefits and U.S. citizenship.**

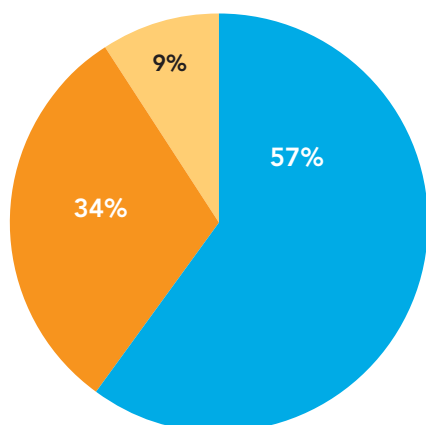


# Jewish Family Service of San Diego

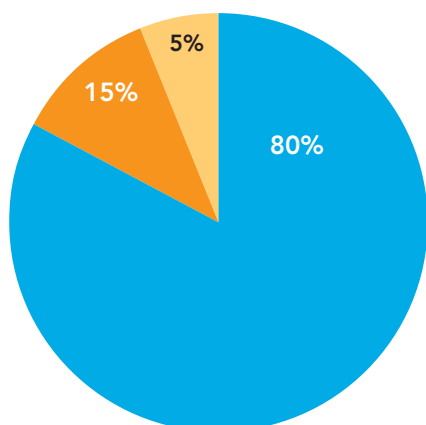
Audited Operating Statements | July 1, 2017–June 30, 2018



Public Support & Revenue		
	Amount \$	Amount %
Public & Private Grants	8,850,303	45%
Contributions	6,648,049	34%
Charitable Adult Rides and Services, Inc.	2,255,731	11%
Client Fees	1,196,639	6%
Investment Income	791,384	4%
<b>Total Revenue</b>	<b>19,742,106</b>	<b>100%</b>
Total Expenses	19,914,129	
<b>Change in Net Assets</b>	<b>(172,023)</b>	



Program Expenses		
	Amount \$	Amount %
Self-Sufficiency	9,103,014	57%
Aging with Dignity	5,482,225	34%
Community Connection	1,365,372	9%
<b>Total Program Expenses</b>	<b>15,950,612</b>	<b>100%</b>



Management Efficiency		
	Amount \$	Amount %
Direct Service & Programs	15,950,612	80%
Advancement	2,965,748	15%
Administration	997,769	5%
<b>Total Expenses</b>	<b>19,914,129</b>	<b>100%</b>

Our audited financials and Form 990 are available at [www.jfssd.org/financials](http://www.jfssd.org/financials)



**11 YEARS**

of Earning Charity Navigator's Highest 4-Star Rating  
Only 1% of nonprofits nationwide can make this claim.

# PERSON BY PERSON. FAMILY BY FAMILY. THIS IS HOW WE MAKE AN IMPACT.

Thank you for all that you made possible this year.

You powered  
**44,773 rides**  
for older adults who  
don't drive anymore

"On the Go shows up for our seniors when they need it, to take them to cancer treatment or bridge club or out to lunch with their friend. It's that one ride a week that can help them feel connected and whole again."

- Tara Guggino, Rides & Smiles Coordinator,  
On the Go at JFS

2,727 volunteers dedicated  
**39,564 hours**  
to building and strengthening  
our community



You ensured that  
**128 Holocaust Survivors**  
were connected and cared for



You provided  
a support system for  
**195 people**  
coping with the symptoms  
of Alzheimer's

"Every older adult has something to share, and my volunteers bring out the best in each person. They know and care for each one of our clients. I don't know what I would do without them."

- Aviva Saad, Program Coordinator,  
Balboa Avenue Older Adult Center

"For unsheltered individuals and families, waitlists are long and access to subsidies is limited. Our goal is to help people increase income and job stability while being a support to them where they are now, and ultimately get them back into permanent housing. With home as a foundation, families can start building toward their future."

- Hanna Lemme, Housing Specialist,  
Safe Parking Program



You touched the lives of  
**4,540 children**  
through Positive Parenting education

You offered safety  
and support to  
**200+ people**  
sleeping in their  
vehicles each night



Your support  
helped transform  
the lives of more than  
**20,000  
people**



"Hunger and food insecurity are not going to disappear overnight. But we can help by making sure that San Diegans have the food they need to sustain themselves and their families."

- Aurora, Hand Up Teen Leader

You distributed  
**274,174 meals**  
to San Diegans  
who need them



## No One Stands Alone In Our Community

In late 2017 as fear and apprehension increased within our community, the San Diego Rapid Response Network (SDRRN) was formed as a broad coalition of 40+ immigrant rights and service organizations, attorneys, and community leaders. Together, with our core partners American Civil Liberties Union (ACLU), SEIU Local 221, and the San Diego Organizing Project (SDOP), the goal of the network is to ensure that *No One Stands Alone*.

The SDRRN focuses on educating, protecting, and assisting immigrant individuals and families – including refugees and asylum seekers – with legal support and social services. JFS leads the SDRRN's legal response effort and provides emergency and non-emergency assistance through a variety of services, including immigration benefit screenings, pro bono legal representation, and safety planning for families.

In October of 2018, the SDRRN opened a temporary shelter operated by JFS, that provides shelter and travel coordination for asylum-seeking families after being vetted by federal agents at the border.

**As of January 2019, the shelter provided resources, medical care, legal aid, and transportation for more than 5,200 migrants – all of them families with young children.**



In December 2018, JFS Director of Immigration Services Kate Clark led Governor Gavin Newsom on a tour of a temporary shelter established to meet the urgent needs of asylum-seeking families.

The San Diego Rapid Response Network held a press conference to garner public support for asylum-seeking families and help fund the temporary shelter operated by JFS in collaboration with SDRRN partners.



# Strategic Initiatives

## **Securing Statewide Support for California's Holocaust Survivors**

Following a legislative proposal initiated by Jewish Family Service of San Diego and stewarded in partnership with the Jewish Public Affairs Committee of California, the State of California appropriated \$3.6 million to create the first-ever California Holocaust Survivor Assistance Program.

**This new State funding will supplement services – including home care, case management, home-delivered meals, transportation and emergency financial assistance – for an estimated 600 elderly Holocaust Survivors who are currently underserved by existing resources in California.**

## **Uplifting Families Impacted by Alzheimer's**

In San Diego, the number of people living with Alzheimer's and related dementias (ADRD) has climbed to more than 84,000. With funding from the U.S. Department of Health & Human Services' Administration for Community Living, and in partnership with Alzheimer's San Diego, the JFS Alzheimer's Disease Initiative provides an integrated care network for people impacted by ADRD, as well as specialized training for staff and volunteers across JFS.

**Services include free assessment and referrals, education and support groups, a personalized music therapy program, and dementia-friendly activities at the Balboa Avenue Older Adult Center.**

## **Helping Families Out of Homelessness**

In October 2017, Mayor Kevin Faulconer announced city funding to support the expansion of the Safe Parking Program at JFS. The program, which has been in operation at the Joan & Irwin Jacobs Campus since 2016, offers individuals and families living out of their vehicles a safe place to park overnight, as well as supportive services to help them transition back into stable housing.

**The new funding doubled the capacity of the program, allowing for 80 additional parking spots and – with support from MG Properties Group – two dedicated Housing Navigation Specialists to help families navigate the complex pathway from homelessness to permanent housing.**

## **Focusing On Health and Recovery**

In 2018, JFS was the sole recipient of a grant from Susan G. Komen San Diego to support our work in Breast Cancer Case Management (BCCM). A unique program in San Diego, BCCM provides bilingual support services – including emergency financial aid, resource navigation, medical-related transportation, and food assistance – for individuals undergoing breast cancer treatment.

**With a goal of helping clients stay focused on their health and recovery, the program has served more than 200 low-income breast cancer patients this past year.**

## **Expanding Food Rescue**

JFS is committed to finding innovative and effective ways to fight food insecurity. Every week, our local food rescue partners including Starbucks, Target, Ralph's, Whole Foods, and Village Mill Bread Company donate produce, dairy and meat products, prepared meals, baked goods, and others food and hygiene items to our Hand Up Food Pantry.

**Over the last year, the number of items rescued from grocery stores or other retail outlets increased to an average of 27,000 pounds per month.**



**"Looking back,  
I wonder how  
we made it."**

– Zockie

**Through three years of homelessness, Zockie fought to keep her family together. By the time she entered our Safe Parking Program, she had almost given up hope.**

In the evening, Zockie would drive to JFS to park for the night. She would set up bedding in the back seat and play classical music for her kids to fall asleep to. They would get up early to shower at the YMCA before school. Sometimes they would go to IKEA just to look at the sofas and beds.

*"I would tell them, 'This is an adventure for us. We might be struggling now, but someday we will get back home.'"*

At JFS, Zockie met with a Housing Specialist who helped her find resources and apply for affordable housing. In August 2018, Zockie qualified for an

apartment. Today, she relishes the sights and sounds of her new home.

*"After so much uncertainty, this is where my kids can come and feel safe. They can relax and spread out here. They walk in, and there's a pantry full of food."*

Zockie is returning to a full-time job as a preschool teacher. As a family, she and her kids look forward to the little things. Cooking dinner together. Decorating pumpkins for fall.

*"At the end of the day, it's love that makes a home. These kids have all of me."*

**Zockie and her children are among the 192 San Diegans who transitioned from homelessness to permanent housing with the help of the Safe Parking Program this past year.**

# Friends of the Family & Major Event Underwriters

## Leadership Circle

### \$50,000 or more

Anonymous 2  
B.J. Adelson  
Tonette Bloomberg  
Charitable Adult Rides & Services  
Judy & Mike Feldman\*  
Esther Fischer\*  
Joan & Irwin Jacobs\*  
Barbara & Mathew Loonin  
Lou Dunst Foundation  
Marilyn & Eugene Marx  
Mark & Hanna Gleiberman\* | MG Properties  
Evelyn & Ernest Rady\*  
Vivien & Jeffrey Ressler\*  
Jeannie & Arthur Rivkin\*  
Marie Raftery & Robert Rubenstein\*  
Andrew Viterbi  
Viterbi Family Fund\*  
Dorothy Winter\* z"l

### \$25,000 – \$49,999

Anonymous 3  
Lisa Foster & Alan Bersin\*  
Jamie Carr  
Cohn Family Foundation  
Melvin Cohn\*  
Guadalupe & Ronald Cohn  
Carol & Carl Crider  
Epstein Family Foundation  
Inge Feinswog\*  
Elliot & Diane Feuerstein\*  
Susanna & Michael Flaster  
Bobbie & Jon Gilbert\*  
Marcia Foster Hazan\*  
Kathleen & Mark Jones  
Miriam & Jerome Katzin\*  
Zita & Morris z"l Liebermensch\*  
Arlene & Louis Navias  
Sheila and Hughes Potiker Memorial Fund\*  
Allison & Robert Price\*  
Laurayne Ratner\* In memory of Sanford Ratner  
Lois J. Richmond\*  
Hon. Lynn Schenk & Hugh Friedman, z"l  
Cynthia Seeborg  
Karen & Jeffrey Silberman\*  
Robert Tauber  
The Church of Jesus Christ of Latter-Day Saints  
U.S. Bank  
Nancy & Gary Weissberg  
Susanne & Louis z"l Wolfsheimer

### \$10,000 – \$24,999

Anonymous 8  
Marilyn Alberts  
Alderyn Fund of the San Francisco Foundation  
Lisa & Gary Levine\* | Arthur J. Gallagher & Co.  
Bad Robot Productions, Inc.  
Elizabeth Hamilton & Ezra Bayda  
Lee & Amnon Ben-Yehuda  
Marsha Berkson\*  
Barbara & Gary Blake\*  
Barbara Bloom\*  
Elizabeth & Daniel Coden

Lena Price & Thomas Cohen  
Aaron Cohn  
Copart  
Marjorie & Sheldon Derezin  
Diane Johnson Charitable Fund  
Emily & Daniel Einhorn\*  
Jill & Bernard Esrock  
Estelle Dunst Revocable Trust  
Heidi & John Farkash  
Franklin Felber  
Comfort Keepers | April & Mathew Fink  
Beverly & Richard Fink  
Judith Fisher\*  
Sandra Fisher\*  
Meryl & Jonathan Flam\*  
Barbara Freeman  
Brigitte & Barry Galgut  
Carrie & James Greenstein  
International Rescue Committee  
Jerri-Ann & Gary Jacobs\*  
Debby & Hal Jacobs\*  
Daphne & Jim Jameson  
Mahau Ma & Sean Joseph  
Linda & Mel Katz  
Knox Family Charitable Fund  
Carol & Richard Kornfeld\*  
Sheila & Jeffrey Lipinsky\*  
Live Nation  
Sylvia & Jaime Liwerant\*  
Sally & Luis Maizel\*  
Barbara Malk  
Marcia & Robert Malkus  
Jenny Meiselman\*  
Milton Silver Trust  
Ilene & Charles Mittman  
Susan & James Morris  
Moxie Foundation  
Congressman Scott Peters & Lynn Gorguze  
Ula Tuszewicka & Michael Pham  
Jori Potiker Brown\*  
Price Philanthropies Foundation  
Robbins Arroyo LLP  
Ana & Abraham Rothman  
Sheryl & William Rpwling |  
Rowling & Associates Fund\*  
M.T. & James Schaeffer  
Jordan Schnitzer  
Benjamin Schulman  
Susan Shmalo  
Lisa & Brad Slavin\*  
Elyse Sollender\*  
Sharon & Jerome Stein\*  
The Episcopal Diocese of San Diego  
Nessim Tiano  
UC San Diego Foundation  
Randi & Charles Wax\*  
Sharon & David Wax\*  
Sylvia Wechter  
Weil Family Foundation  
Ruth & Stanley Westreich  
Caryl Lees Witte  
Marc Wolfsheimer  
Jacqueline & Bertram Woolf  
Bebe & Marvin Zigman

## Visionary

### \$5,000 – \$9,999

Anonymous 5  
Tali & Michael Abramson\*  
Lisa & Steven Altman  
Judith & Lawrence Belinsky\*  
Cindy & Laurence Bloch  
Gail & Mark Braverman  
Rebecca & James Brewer\*  
Nancy & Matt Browar  
Deborah Bucksbaum\*  
Pamela & Spencer Burkholz  
Capital Auto Auction, Inc  
Care 1st Health Plan  
Pamela & Edward Carnot  
Marc Channick\*  
Adina & Steve Chinowsky  
Elaine Chortek\*  
City National Bank  
Dan Cameron Family Foundation  
Delphi Private Advisors  
Gabrielle & David Dorne  
Marti & James Eisenberg  
Robin & Leo Eisenberg  
Claire & David Ellman\*  
Alberta Feurzeig  
Kira Finkenberg  
Faiya Fredman  
Howard Freedlan  
Laura Galinson & Jodi Diamond\*  
Marcia & Matt Gettinger  
Francine & Phillip Ginsburg\*  
Abraham Gleiberman  
In memory of Frances Gleiberman  
Marleigh & Alan Gleicher  
Beverly z"l & Joseph z"l Glickman\*  
Carole & Howard Goldfeder  
Meg & Allan Goldstein\*  
Eva & Strul Goldstein  
Good Samaritan Episcopal Church  
Nancy & Michael Gordon  
Lynn & Richard Gordon  
Judi Gottschalk\*  
Leo S. Guthman Fund  
Stacy & Jonathan Halberg\*  
Alan Haubenstock  
Tammy & Lawrence Hershfield  
Lisa Hertz  
Leonard Hirsch  
Patti & Michael Hoffman\*  
Robert Horowitz  
Raulee & Daniel Howard  
Hughes Marino, Inc.  
Irving and Francine Suknow Foundation  
Hilary & Selwyn Isakow  
Samita Jacobs  
Nancy Janda  
Linda & Edward Janon  
Emily & Chris Jennewein  
Jewish Community Foundation of San Diego  
Susan & David Kabakoff\*  
Lee Kaiser & Linda Sorkin  
Marjorie Kalmanson  
Margaret & Jerald z"l Katleman\*  
Janet Klauber & Jim Melli  
Jerry & Gayle Klusky  
Lisa & Gregg Kornfeld\*  
Sandra & Arthur Levinson\*  
Jennifer & Jay Levitt\*

Nancy Linton  
Estelle z"l & Hamilton Loeb\*  
Nancy Heitel & Brian Malk\*  
Manheim Total Resource Auctions  
Manuel and Nettie Fisher Family Fund\*  
Karen & Larry McCracken  
Barbara & Howard Milstein  
Anna & Neil Mintz  
Mort Vogelsson Endowment  
Moselwood Fund  
Erin Combs Pearl & Howard Pearl  
Hebe Peralta  
Lorne Polger  
Sharon & Raulf Polichar  
Julie & Lowell Potiker\*  
Adele Rabin  
Marcie Sinclair & Andrew Ratner  
Loren Ellis & Matthew Rattner\*  
Refugee Support Company  
Lauren & Robert Resnik\*  
Brian Riley  
Marilyn & Michael Rosen  
Margot Sayer  
Megan Sayer  
Lillian Scharlin\*  
Barbara Bry & Neil Senturia\*  
Servicenow  
Bill Silva  
Gayle & Donald Slate\*  
Audrey Viterbi Smargon & Daniel Smargon\*  
The Honorable Stephanie Sontag  
Daniel Soto Kobernick  
Spielman Family In memory of Jenny Spielman  
Michael Stotsky  
The Susan Scott Foundation  
The San Diego Foundation  
Karin & Tony Toranto  
Trifecta IT Solutions  
UDW  
Ellen & James Weil  
Cathy & John Weil\*  
Joy & Stephen Weiss\*  
Rachel & Adam Welland  
Wells Fargo Advisors  
Betty Zander  
Joellyn & Ron Zollman\*  
Emma & Leo Zuckerman

## Champion

**\$2,500 – \$4,999**

Anonymous 14  
Loretta H. Adams  
Dominick Addario  
Karen & Daniel Adler  
Karen Hartz & Jan Adler  
Laurie & Kamuran Aker  
Sandra & Earl Altshuler  
Betty Amber & Rhonda Amber In memory of  
    Sylvia Weider Amber & Paul Sholem Amber  
Heidi & Noam Arzt  
Joan & Jeremy Berg  
Ralph & Roberta Berman\*  
Julie & Edgar Berner\*  
Gayle Blatt  
Stefanie Levine & Michael Breslauer  
Ann & Leonard Brown  
Eve Benton & Malcolm Bund  
Carol & Jim Carlisle  
Kim & David Chao  
Rita Cohen  
Laurie & Matthew Coleman  
The Copen Family Fund  
Anna Curren  
Dell Enterprises  
Eleanor Doyle  
Hal Dunning  
DuoCircle LLC | Brad Slavin and Hilton Sher  
Linda Easler

Linda & Julio Echegoyen  
Patricia Libby & Michael Eichler  
Estee Einhorn  
Anne Eisenberg  
Aileen & Daniel Emer\*  
Employee Rights Center  
Jaime Feder  
Joyce Axelrod & Joseph Fisch\*  
Carol & Ronald Fox\*  
Judith & Dr. William Friedel\*  
Sheila & Martin Friedlander  
Jean & Otis Froning  
Sylvia & David Geffen\*  
Jessica & Mike Goff  
Brenda & Michael Goldbaum  
Michele Gorcey  
Dana & Lee Gordon  
Michael Green  
Karen and Joshua Gruenberg  
Cristin Hagaman  
Diana Hahn in memory of Norman Hahn  
Sophie & Henry Haimsohn\*  
Theresa Hassidim  
Rita Heller\* In memory of Aron & Bluma Heller  
Susan Hoehn  
Michael Hopkins\*  
Thomas Horan  
Human Rights Commission  
Lindsey and Aaron Hurvitz II  
Gail Hutcheson  
Robin & Ron Israel  
Ann & Richard Jaffe  
The Jasada Foundation  
Larry Katz  
Nadja & Emanuel Kauder\*  
Mark Kersey  
Terry Klitzner  
Knapp Family Foundation  
Jennifer & Mathew Kostrinsky  
Robert Lazarus  
Mimi Lee  
Jessica & Michael Lees  
Geraldine Levine  
Cheryl & Gary Levitt  
Shana & Bill Lew  
Liber-Lincoln Wealth Management Group -  
    Wells Fargo Advisors  
Trisha & Larry Liebermensch  
Judith & Jack Lief  
Lightbridge Hospice, LLC  
Eric Linebarger  
Julie & Harry Litman  
Lorimar Winery Inc  
Jackie & Charles Mann\*  
Cindy Marten  
Lisa & Paul Martens  
Linda Levy & Ted McGrath  
Anna & Chris McGuiness  
Esther and Carlos Michan  
Danielle & Brian Miller\*  
Patricia & Mike Mogul  
Tal Moore  
Mark Mullen-Muhr  
My Sister's Closet  
Amy & Edward Nefouse  
Mary & Jim Nierman\*  
Michael Nyberg  
Gabrielle & Glenn Oratz\*  
Atul Pande  
Marina & Rafael Pastor  
Sam Patella  
Iris & Todd Pearlman  
Peddle  
Catherine & Gabriel Piorko  
Mona & Jeffrey Platt  
Bridget & Howard Poizner  
Howard Potash\*  
Harriet Prenner  
Laurie Price  
QUALCOMM, Matching Grant Program  
Karen Reibstein  
Linda Chester & Kenneth Rind\*  
Penny & Barton Rivin  
Carol & Howard Robin Fund  
    at the San Diego Foundation  
Judith Rosen\*  
Barbara & Sanford Rosenthal  
Colleen & Ken Roth  
Karen Fox & Harvey Ruben  
Joan Rubin

Marcia & Raymond Sachs  
Safdie Rabines Architects  
Brigitte & Gerrard Salomon  
Swanna & Alan Saltiel  
San Diego Ice Arena  
Lana Schaffer  
Shari & Frederick Schenk  
Amy & Bret Scher\*  
Scott Schindler  
Elyse & Larry Schloss  
Herb Schnall  
Judith & Marc Schuckit  
Denise & Howard Schwartz\*  
Suzanne Schwartzman  
Paul Segal\*  
Nancy Gold & Colin Seid\*  
Sempra Energy Foundation  
Thomas Sickinger In memory of Vera Sickinger  
Elizabeth & Mitchell Siegler  
Nanci & Jack Simkin  
Nancy & Ronald Slayen  
Stefanie Schiff & Joel Smith\*  
Dolores & Rodney Smith  
William Snyder  
Nancy & Alan Spector  
Laurie & Mark Spiegler  
Julie Spielberg Senet & Brad Senet  
Jill & Mark Spitzer  
Jill Stone  
Shelby Strong  
Bethany Stuckelman & Mark Stuckelman\*  
Swartz Family Foundation  
Charles Tesar  
The Sisters Of The Presentation  
Neola Benedek Treisman & Warren Treisman  
Elizabeth Van Denburgh  
Caryn & Alan Viterbi\*  
Ellen Waddell  
Howard Weiner  
Jo Ann Weissman  
Jill & Bruno Wolfenzon  
Doris & David z"l Yorysh  
Helene & Allan Ziman\*  
Allan Zukor

## Pacesetter

**\$1,200 – \$2,499**

Anonymous 26  
Simone Abelson  
Mildred Ackerman  
The Acorn Foundation  
Sherril & Mitch Adler  
The Alexander & Eva Nemeth Foundation, Inc.  
Sean Alexander  
Todd Allen  
Auction City  
Wendy & Chaim Avraham  
Mia Babson-Goldklang & Robert Goldklang  
Margaret Barnett  
James Barone  
June Barreras  
Benjamin Barth  
Alan Baskin  
Joan Beber\*  
Kathy & Robin Becker  
Sheila Belinsky  
Diogo Belo  
Linda & Michael Bennett\*  
Sherrie & Jonathan Benumof  
Naima Solomon & Jason Bercovitch  
Carla & Geoffrey Berg  
Georgie Bernstein  
Robert Berton  
Reni Biro  
Melissa & Mike Bishop  
Masha & Jordan Block  
Dena Bloom  
Judith & Richard Blum  
Howard Bolotin  
Irene Borevitz\*  
Lorraine Boyle  
Randy Bragdon & Paul Tibbits  
Daniel Bressler  
Miriam & Jack Breyer  
Linda & Daniel Brown  
Deborah Calhoun  
Martha Cannon  
Chalice UU Congregation  
Susan Channick  
Peggy & Stanley Chodorow  
Lisa Clifford



Dalia & Ed Cohen  
 Sharon L. Cohen  
 Renee Cokin\*  
 Linda & Wayne Scott Cole  
 Congregation Beth El  
 Congregation Beth Israel  
 Ruth Covell  
 Joel Craddock & Mark Parker  
 Richard Custard  
 The Dalke Family  
 Maxine Verne in memory of Sabina Davidson  
 Karyn Dejong  
 Diane Simkin & Steven Demeter\*  
 Barbara and Ellis Diamond\*  
 Lorna & Ronnie Diamond  
 Kathleen Durning of the San Francisco Foundation  
 Linda & Gary Eaton\*  
 Karen Helrich & Bertram Edelstein\*  
 Dorothy Ehrlich  
 Lois & Martin Ehrlich  
 Devorah Marcus & Sebastian Eickholt\*  
 Max Einhorn\*  
 Al & Naomi Ruth Eisman\*  
 Amy & Steven Epner  
 Janet Brody Esser  
 Rebecca & Edward Etes\*  
 Steve Ewalt  
 Michael Fader  
 Suzi & Bernie Feldman\*  
 Nomi Feldman  
 Jessica & Robert Fink\*  
 Cindy Coats & Barry Finkenberg  
 Karen & Brian First  
 Barbara M. Fischbein  
 Merle & Theresa Fischlowitz  
 Richelle Ford  
 Lori & Jeffrey Frank  
 Stephen Fredman  
 Freeman Family Foundation  
 Clare & Paul z"l Friedman  
 Donald Fuhrman  
 Allison & Daniel Gardenswartz\*  
 Tara & Dustin Gillman  
 Monica Handler Penner & Amnon Gires  
 Lisa Braun-Glazer & Jeffrey Glazer\*  
 Diane Glow  
 Jeanne Gold  
 Delores & Barry Goldberg  
 David Goldman  
 Lucy Goldman\*  
 Benjamin Gomez  
 Linda & Robert Gordon  
 Carolina & Robert Gottlieb  
 Danika Grady  
 Barbara Cera & Gordon Grant\*  
 Carol Butler & Lawrence Gratt\*  
 Susan Freeman & Philip Graubart  
 Andrea & Howard Greenberg\*  
 Lara & Brandon Grusd\*  
 Claire & David Guggenheim  
 Betsy & Gary Gullickson  
 Rebecca & Jerry Gumpel\*  
 Devorah & Itzhak Gurantz  
 Julie & Howard Haimsohn  
 Merrill & Robert Haimsohn  
 Taunya & Darryl Hall  
 Tema & Dave Halpern  
 Clyde Hammond  
 Marlene & Marc Hamovitch  
 Julie & Matthew Harelson  
 David Harris  
 Ruth & James Harris\*  
 Patricia Hawkins  
 Dorothy Hollingsworth  
 Nancy & Richard Horowitz  
 Kelly Huggett  
 Anya & Brian Iffeld  
 Joan Jacobs  
 Joan & Ivor Jacobson  
 Shari Jacobson  
 Steven Jacobson  
 Nancy Jamison  
 Paul Johnsen In memory of Bonnie Kessler-Johnsen  
 Johnson & Johnson Matching Gifts  
 Knut Johnson  
 Cecile B. Jordan\*  
 Joseph and Anna Gartner Foundation  
 Kaiser Permanente San Diego  
 Andrew M. Kaplan\*

Kelly & Robert Kaplan  
 Kate & John Kassar  
 Ann & Howard Katz  
 Sheryl Kaufman\*  
 Debbie & Solomon Kempinski\*  
 Barbara & Gerald Kent  
 Howard Kipnis  
 Barbara & Selwyn Klein  
 The Kleinman Family Gift  
 Marie & Markell Kohn  
 Fraeda Kopman  
 Debra & David Kramer  
 Ilona Szer & Paul Kurtin  
 Regina Kurtz  
 Kwitman Family Foundation, Inc.  
 Debbie Seid & Craig Lambert\*  
 Helene Langer  
 Lawrence Family Jewish Community Center  
 Eileen Hoag & Ira Lechner  
 Sharon Rosen Leib & Richard Leib\*  
 The Leichtig Foundation  
 Golnoosh & Ian Lerner  
 Susan Lerner  
 Arleen & Robert Lettas  
 Audrey & Steven Levine  
 Mimi & Theodore Levine  
 Frieda Levinsky  
 Michael Levinson\*  
 Jill & Ronald Levitt  
 Theodora Lewis Pincus\*  
 Rhonda Amber & Jonathon Licht\*  
 Lee & Julian Lichter  
 Grace & Gerald Lieberman  
 Sandra L. Lieberman  
 Judy & Michael Linden  
 Patty Ungar-Linssen & Philip Linssen |  
 San Diego Ice Arena  
 Ann & Gerald Lipschitz\*  
 Marshall Littman\*  
 Mark Lohkemper  
 Love 2 Live Inc.  
 Melane & Philip Lurie  
 Marilyn & Ed Magnin\*  
 Laura Maio  
 Barbara Mandel  
 Darla Marcus  
 Ruth & Lenny Markovitz  
 Beatrice & Carl Melcher\*  
 Pat & Teresa Menke  
 Adie & Stan Mestman  
 Sally & Jeffrey Meyer  
 Margaret & Paul Meyer\*  
 Rhonda & Robert Meyer  
 Ilana & Scott Mittman  
 Linda Moilanen  
 Margie Mopper  
 Frances Mortenson  
 Nan Moser  
 Hannah Moss  
 Perla & Jeffrey Myers  
 Nancy & Alan Nevin  
 Ronald Newell  
 Rebecca & Lawrence Newman\*  
 Beth Newton  
 Maya & Steven Oberman\*  
 Ohr Shalom Synagogue  
 Marjorie Omalley  
 Sima & Joseph Oppenheimer\*  
 Otay Auto Auction  
 Our Lady Of Guadalupe  
 Sallie Palash  
 Margaret Parker  
 Steve Oddo & Joshua Patz  
 Janice Peerson  
 Courtney Peraza  
 Patricia z"l & Richard Perlman  
 Vicki & Art Perry  
 Daniel Pick  
 Paige & Lukas Pick  
 Shirley & Harold Pidgeon\*  
 Liora and Mauricio Pier  
 Eli Plaxe  
 Judith Pollack  
 Gary Pollak  
 Judy & Joel Pressman  
 Gigie & Laurence Price  
 Taal & Ricardo Rabines  
 Michelle & Bruce Rawdin-Baron  
 Marlene & Michael Recht In memory of Bella Cymbberg

Beth Reed  
 Joan & Robert Reese  
 Sarah Reetz  
 Miyo & Mitchell Reff  
 Jodyne Roseman  
 Arlene Rosen\*  
 Sonia & Leon Rosenberg  
 Ellen & Anthony Sacks\*  
 Rae & Edward z"l Samiljan\*  
 San Diego Gas & Electric  
 San Diego Repertory Theatre  
 San Diego Sports Medicine Foundation  
 San Marcos Lutheran Church  
 Nancy and Donald Sandweiss  
 Linda & Robert Sanet\*  
 Maurice Sasson  
 Helen Saylor  
 Beverly Scarano  
 Shana Hazan & Marc Schaefer\*  
 Carolyn & Herb Schaeer  
 Marilyn Scheininger  
 Jane & Colin Scher  
 Marilyn & Leonard Schiff  
 Laura & Rick Schragar  
 Suzanne & Paul Schulman  
 Joan & Paul Schultz\*  
 Ira & Mindy Schwartz  
 Jon Schwartz  
 Denise & Sydney Selati\*  
 Lise & William Shanahan  
 Danielle & Steve Shulman  
 Maureen Shumate  
 Dani & Jason Sicklick  
 Fern & Lee Siegel  
 Charlotte & Hano Siegel  
 Virginia z"l & Joseph Silverman  
 Robert Silverman  
 Anne & Ronald Simon  
 Virginia & Paul Sloman  
 Ruth Slonim  
 Lynne & Lance Small  
 Marilyn & Stanley Smiedt\*  
 Irene Smith  
 Marsha Sutton & Roger Smolin\*  
 Elaine Galinson & Herbert Solomon\*  
 Judith & Norman Solomon  
 Ahouva Steinhau  
 Amy & Michael Stern\*  
 Ruth Stern  
 Aubrey Stone  
 Gloria & Rodney Stone\*  
 Marilyn Johns & Peter Stovin  
 Lilly Strausberg  
 Ruth & Eli Strich In memory of Robert Strich  
 Shelly Sulit  
 Sylvia Weider Amber Family Foundation  
 Sam & Barb Takahashi Family Fund  
 at the San Diego Foundation  
 Arlene Bobrow & Charles Tanabe  
 Laura & Brian Tauber  
 Dana & Jack Tavelman  
 April Teitelbaum  
 Phoebe Telser  
 Renee & Allen Tepper  
 The Boeing Company Gift Match //BPAC Program  
 Maxine Snyder & Tom Turner\*  
 Jerome Van Amburg  
 Gillian & Evan Vapnek  
 V-Dac, LLC  
 Tamora & Louis Vener  
 Vertex Pharmaceuticals Foundation  
 Barbara Reed & Richard Ward  
 Ruth Wasserman  
 Jamie & Kevin Wechter\*  
 Susan & Stuart Weinsinker  
 Ellen Weinstein  
 Kathy & Stuart Weinstock  
 Susan Chortek Weisman & Eric Weisman\*  
 Carol Weisner  
 Suzanne & Edward Weissman In memory of Dona Gratt  
 Perri Wittgrove  
 Julie & Anton Woolf  
 Sally & Steven Wyte  
 YourCause, LLC Trustee for HP  
 Gloria & Irwin Zalkin  
 Temple Zander  
 Michele Zousmer

\*All or partial funds granted through the Jewish Community Foundation  
 z"l — Of Blessed Memory

# Thank You

We are deeply grateful for the individuals, businesses, foundations, and government agencies who help us fulfill our mission.

## Foundation and Corporations

Abraham Gray and Elfriede Meth Endowment Fund of the Jewish  
ACLU Foundation of San Diego & Imperial Counties  
Automobile Club Enterprises of Southern California  
Borealis Philanthropy  
The California Endowment  
The California Wellness Foundation  
Change A Life Foundation  
City National Bank  
Claire Giannini Fund  
Community Service Association  
County of San Diego-Supervisors  
Dalebrook Endowment Fund  
Direct Relief  
Federal Home Loan Bank of San Francisco  
Feeding San Diego  
Samuel I. and John Henry Fox Foundation at Union Bank  
Samuel & Katherine French Fund  
Gary and Mary West Foundation  
Beverly z"l & Joseph Glickman\*  
Grossmont Healthcare District  
Joan & Irwin Jacobs\*  
James Irvine Foundation  
Jewish Federation of San Diego County  
Jewish Women's Foundation of the Jewish Community Foundation  
Kaiser Permanente San Diego  
Kaiser Permanente Southern California  
Lawrence Family Jewish Community Center  
The Leichtag Foundation  
Mandell Weiss Charitable Trust  
Marguerite Casey Foundation

Meals on Wheels Association of America  
Mizel Family Foundation  
The Moriah Fund  
Motiv - San Diego Jewish Teen Initiative  
Nordson Corporation Foundation  
Pacific Premier Bank  
The Parker Foundation  
Peacemakers Fund  
Pfizer Foundation  
Arthur P. and Jeanette G. Pratt Memorial Fund at Union Bank  
Price Philanthropies Foundation  
Rancho Bernardo Sunrise Rotary Club Foundation  
The S. Mark Taper Foundation  
San Diego County Bar Foundation  
San Diego Gas & Electric  
San Diego Repertory Theatre  
SCAN Health Plan  
SeaChange-Lodestar Fund  
Sidney Stern Memorial Trust  
The Social Changery  
Susan G. Komen San Diego  
The Church of Jesus Christ of Latter-Day Saints  
The San Diego Foundation  
U.S. Bank  
Union Bank Foundation  
United Way of San Diego  
USS Midway Museum  
Wells Fargo Foundation

## Government and Public Funders

Americorps – Service Enterprise  
California Department of Social Services  
City of Palm Springs  
City of San Diego  
County of San Diego Aging and Independent Services  
County of San Diego Behavioral Health Services  
County of San Diego – Board of Supervisors

San Diego Association of Governments (SANDAG)  
San Diego County Employees' Charitable Organization  
United States Department of Health & Human Services –  
Administration for Community Living  
U.S. Department of Housing and Urban Development (HUD) –  
County of Riverside  
County of San Diego HHS – Communities in Action



Support was provided by the URO Charitable Lead Trust Limited and the Harry and Jeanette Weinberg Holocaust Survivor Emergency Assistance Fund, Administered by the Conference on Jewish Material Claims Against Germany, for the benefit of needy Jewish Nazi Victims.



**The \$50,000,000 Centennial Countdown Campaign is made possible by a \$25,000,000 matching gift from the Rady Family Foundation.**

Ernest and Evelyn Rady are deeply committed to the long-term sustainability of Jewish Family Service because of the critical role the agency plays in the lives of more than 20,000 people each year, and have challenged the community to join them in sustaining this vital resource long into the future.

All cash gifts made to the campaign will be matched dollar for dollar, as will all bequests confirmed by those age 70 or older. This matching challenge will remain in effect until the goal is realized or the end of the campaign on November 19, 2023.



## Thank You Centennial Countdown Campaign Donors

---

From the Ackerman Family in Memory of Beloved Husband,  
Father & Past President of JFS, Sam Ackerman  
Cyril Adler  
Murray Anne Marie Anker Endowment  
Dr. Lawrence Baron & Bonnie Baron  
Edgar & Julie Berner Family  
Edward & Pamela Carnot in honor of their children, Brett  
& Kimberly & their grandchildren, Zoe, Eden, Emma, Harley  
Susan Chortek Weisman  
The Randy Clark & Tom Maddox Endowment Fund  
of the Jewish Community Foundation  
Betty z"l & Melvin Cohn  
Genevieve z"l & Richard z"l Conroy  
Joan Cooper\* z"l  
The Craddock/Parker Trust  
Alberta Feurzeig  
Arnold & Esther Fischer  
The M & T Fischlowitz Family Foundation  
Susanna and Michael Flaster  
Pauline Foster z"l  
Judith & William Friedel  
Elaine Galinson  
Bobbie and Jon Gilbert  
Joseph & Beverly Glickman Fund  
of the Jewish Community Foundation  
Diana L. Hahn Fund  
Phyllis & Gordon Harris  
Marcia Foster Hazan  
Michael Hopkins  
Edward and Linda Janon  
John Lewis Newberger Estate  
Nadja Kauder Bequest

Roberta Kaufman-Fredericks Trust  
Paul & Guinevere Kerstetter  
The Kleinman Family Gift  
Sandra & Arthur Levinson in honor of Julia & Eliana Levinson  
Theodora F. Lewis  
Hamilton M. Loeb Jr.  
Mathew & Barbara Loonin  
The Robert & Marcia Malkus Family Trust  
Dr. Charles and Ilene Mittman  
Payne Family Trust  
Riber Family Bequest  
Lois J. Richmond Family Fund  
Marie Raftery & Dr. Robert Rubenstein  
Marie Raftery & Dr. Robert Rubenstein  
Sanders Family Trust  
Maurice Sasson in honor of Isaac Moses & Fortunee' Sasson  
Scharlin Family Fund of the Jewish Community Foundation  
Congresswoman Lynn Schenk & C. Hugh Friedman z"l  
Schmier Family Trust  
Ira & Mindy Schwartz  
Cynthia Seeberg  
Barbara Bry & Neil Senturia  
Ronald & Nanci Slayen  
Jill and Mark Spitzer  
Jill R. Stone  
1995 Rae K. Tauber Family Trust  
Vener Living Trust  
Lawrence & Lainy Vinikow Trust  
Weissberg Family Trust  
George T. & Gayle Wise Family Trust  
Linda Woodbury z"l

## Building a Legacy of Together

The JFS Legacy society honors donors who have made provisions in their estate plans to ensure that we can continue to meet our community's most pressing needs for generations to come. Your planned gift can help shape the future of our community.

**Patty Fuller, Planned Giving Specialist (858) 637-3099**

Sam z"l & Mildred Ackerman  
Loretta H. Adams  
Cyril Adler  
Shirley Alexander  
The Alice Alperin Revocable Trust  
Gertrude Aminoff z"l  
Murray z"l & Anne-Marie Anker  
Endowment  
Cecelia Appelbaum  
Bernie z"l & Josephine Arenson  
Ellis Atkins  
Donald August Trust z"l  
Joyce Axelrod & Joseph Fisch  
Barnett Family Fund  
Lawrence & Bonnie Baron  
Stanley Beck  
Simone Bennett Trust  
Barry Berelowitz  
Robert & Sondra Berk  
Ralph & Roberta Berman  
Edgar & Julie Berner  
Stanley F. Bernstein z"l  
David Bildner  
Mania Borenstein z"l  
Phillip & Sylvia z"l Borkat  
Larry z"l & Sandra Bornstein  
Jane Brand  
Daisy Brodsky z"l  
Arthur z"l & Sophie z"l Brody  
Carolyn Brothers z"l  
Claudette Broussard  
Bruce & Karla Castetter  
Peter z"l & Elaine Chortek  
Susan Chortek-Weisman  
Barbara Clark  
Joseph Cohen & Martha Farish  
Melvin & Betty z"l Cohn  
Genevieve z"l & Richard Conroy z"l  
Joan Cooper z"l  
Dorothy Cox  
Joel Craddock & Mark Parker  
Gertrude Cromartie z"l  
Richard Custard  
Diane Decourcy  
Nell Demeter z"l  
Sylvia DeWoskin Fund  
Ronnie & Lorna Diamond  
Patricia Doering

Philip Dolgoff  
Karen Eddie  
Norm z"l & Joan Eichberg  
Ron Eisenberg & Devora Safran  
Al & Naomi Eisman  
Lee z"l & Maria Elson z"l  
Louis & Adelle Engel z"l  
Samuel & Jane Engelman  
Janet Esser  
Else Feistmann  
Inge Feinswog  
Ina Felczer  
Marshal & Dina Feldman-Scarr  
Morey z"l & Jeanne Feldman z"l  
Robert & Adrienne Feldner  
Miles & Wendy Ferguson  
Alberta Feurzeig  
Myla & Dr. Donald Fields  
Tobie Fink  
Norman & Susan Finkelstein  
Fischer Family Trust  
Merle & Teresa Fischlowitz  
Nettie Fisher z"l  
Michael & Susanna Flaster  
Martin & Lucille Fleischman  
Muriel Fleischman z"l  
Katherine Fleischner-Burns  
Reuben Fogelson z"l  
Foster Family Foundation  
Ronald & Carol Fox  
Faiya Fredman  
Friederike Freund z"l  
Judith & Dr. William Friedel  
Elaine Galinson  
Richard Gelb & Lynne Zaklin  
Julian Gelber z"l  
Rita Geller  
Jon & Dottie Gilbert  
Joseph z"l & Beverly z"l Glickman Trust  
Michael & Brenda Goldbaum  
Maurice A. Goldberg z"l  
Milton & Madeline Goldberg  
Foundation z"l  
Samuel Goldberg z"l  
Shirley Goldberg z"l  
Claire Goldfaden z"l  
Howard & Carole Goldfeder  
Harry Goldman z"l

Marcy Goldstone z"l  
Teresa Goodwin  
Florence S. Goldman  
Gordon Family Fund  
Gotkowitz Family Foundation  
Herbert z"l & Marlene Greenstein  
Robert Greenstein  
Alex & Marianne Grossman  
Charlotte Haas z"l  
Marcia Haas z"l  
Norman z"l & Diana Hahn  
Henry & Sophie Haimsohn  
Sally Halms  
Helen Harlan z"l  
Gordon & Phyllis Harris  
Anne Hayden  
Marcia Foster Hazan  
Agnes Herman  
Estelle Herman  
Ernest & Lillian Herzberg  
Henry Herzog  
Michael & Elaine Hess  
Arthur z"l & Hannah Heymann z"l  
Betty Hiller  
Bess Hock  
Michael Hopkins  
Robert & Marie Ilko  
Shirley Imber z"l  
Fredericka Ingham z"l  
Edward & Linda Janon  
Paul Johnsen & Bonnie z"l  
Kessler-Johnsen  
Delise Konigsbach  
Cecile B. Jordan  
Joseph Kahl z"l  
Saul & Rita Kamlet  
Mickey & Jeri Kaplan  
Stuart Karasik  
Barry & Avra Kassar  
Jerald & Margaret Katleman  
Emanuel & Nadja Kauder  
Lillian Kaufman  
Roberta K. Kaufman-Fredericks  
Rebecca Kerdie Levine z"l  
Irving & Beatrice Kern  
Lillian Kerr  
C. Paul z"l & Guinevere A. Kerstetter  
Bonnie Kessler z"l

Harry Kessler z"l  
Steven Kleinman z"l  
Terry Klitzner  
Rita Koor  
Constance E. Korn  
Herbert Kratze & Joan Miringoff  
Elaine Krieger Trust z"l  
Helene Kruger  
Aaron & Bernadette Landau  
Ruth Landau  
Dorothy Last z"l  
Robert Lazarus  
Regina Lee z"l  
Harriet Levin z"l  
Kerdie & Rebecca Levine z"l  
Arthur & Sandra Levinson  
Lawrence & Nancy Levy  
Fred Lewin  
Theodora F. Lewis  
Zita & Morris z"l Liebermensch  
Nancy Linton  
Frances Lobman  
Hamilton M. Loeb, Jr.  
Loonin Family Fund  
Herbert & Marsha Lubick  
Barbara & Jeffrey Lubin  
Barbara A. Lubin (delete)  
Tom Maddox & Randy Clark  
Brian Malk & Nancy Heitel  
Robert & Marcia Malkus  
Barbara Mandel  
Sanford Margolies z"l  
Ralph & Sandy Mayer  
Hillel Mazansky  
Gloria Mazur z"l  
Walter Medelsohn  
Louis Mednicoff z"l  
Cantor Sheldon & Marcie z"l Merel  
Ellen Miller  
Gertrude Millman z"l  
Barbara Mitchell  
Gloria B. Mithers  
Charles & Ilene Mittman  
Elaine Moser z"l  
Phoebe Munz z"l  
George Nathan z"l  
Laurel Nation  
Jeanette Neely  
Miriam Neuhauser z"l  
Alan & Nancy Nevin  
Jon & Kathleen Nevin  
John Newberger z"l  
Ronald Newell  
Harriet Newmark z"l  
Helen Orin z"l  
Lawrence & Andrea Oster  
Max Pawl z"l

Payne Family Trust  
Sarah Person-Leeds z"l  
Eli Posinoff z"l  
Shirley Pollack z"l  
Ernest & Evelyn Rady  
James & Lauren Ramenofsky  
Ruth Raskin z"l  
Sanford z"l & Laurayne Ratner  
Cheryl Rattner-Price  
Ramon & Debra Reid  
Pearl Reitner z"l  
William & Sherry Resh  
Lois J. Richmond  
Harold Ritter  
Barbara A. Rose  
Annette Kaplan Rosenberg z"l  
Bernice R. Rosenberg  
Frieda Rosenberg  
Morris Rosenberg  
Hanna Roskin  
Dr. Robert Rubenstein & Marie Raftery  
John Ruden z"l  
Irving Saloman  
Clarence & Deborah Salzer  
Edward & Rae Samiljan  
Sanders Family Trust  
Sandra Jean Silvers Trust  
Maurice Sasson  
Ruth Schank z"l  
Lillian Scharlin  
Mark & Diana Schatz  
Lynn Schenk  
Bret & Amy Scher  
Irving z"l & Gloria Schiffman  
Robert Schimmelfennig z"l  
Beverly Schmier  
Elliot & Eileen Schubert  
Benjamin Schulman  
Stephen & Susan Schutz  
Fred Schwartz z"l  
Hyman Schwartz z"l  
Ira & Mindy Schwartz  
Janet Sybil Schwartz z"l  
Sigmond Schwartz z"l  
Suzanne Schwartzman  
Nicki Schweitzer  
Edward & Melynnique Seabrook  
Mike z"l & Cynthia Seeberg  
Neil Senturia & Barbara Bry  
Melvin Shapiro  
Jerome & Phyllis Sharrin  
Mark & Diana Shatz  
Leon & Fern Siegel  
Milton Silver  
Patricia Silver  
Edward & Zella Silverstein  
Arnold z"l & Lucille M. Sirk

Ronald Slayen  
Phil & Ruth Slonin  
Lance & Lynne Small  
Mildred Small  
Kenneth & Edith Smargon  
Henry Soille z"l  
Pesla Sonabend  
Soontup Family Trust  
Mark & Jill Spitzer  
Alan Springer  
Francis Starr  
Patricia Stein  
Vera Stein  
Anneliese Steppat z"l  
Marty Stern & Marcia Kern  
Dorrit Still z"l  
Evan z"l & Jill Stone  
Anthony & Judith z"l Summers  
Morris Swider  
Rae Tauber z"l  
Robert Tauber  
Nessim & Sarah z"l Tiano  
Celia Tingley  
Louis & Tamora Vener  
Lawrence & Lainy Vinikow  
Morton Vogelson z"l  
Peggy Wallace  
Stephen Wax & Laurie Price  
Sylvia Wechter  
John & Cathy Weil  
Daniel & Sheila Weinberg  
Carol Weisner  
Stephen & Joy Weiss  
Nancy Weissberg Charitable Fund  
Harry z"l & Jo Ann Weissman  
Clara Weitz z"l  
Joseph z"l & Joyce Weitzen  
Larry & Mary Lynn Weitzen  
Eric & Irene Wetsman  
Sydney & Cynthia Wexler  
Bernard & Vera Wiernik  
Gordon & Marilyn Williams  
Anne Wilson  
Martin & Olivia Winkler  
Rachel G. Winsten z"l  
Stanley z"l & Dorothy Winter  
George & Gayle Wise  
Louis & Suzanne Wolfsheimer  
Gertrude Womark z"l  
Linda Woodbury z"l  
Bertram & Jacqueline Woolf  
Ann Youngwood  
Charles z"l & z"l Leah Zibbel  
Lillian Zilbercweig z"l  
Norman & Jane Zmora  
Alan Zimmelman  
28 Anonymous



“There really are kind people in the world. I’m reminded of that every day.”

– Anthea

## When we got to Anthea’s house, the roof looked ready to collapse.

It had rained that morning, and there were buckets collecting water as it dripped to the floor.

Anthea has lived in the same house for the past 30 years. She wheels an oxygen tank behind her as she goes from room to room. With her medical costs climbing, she took in a roommate to help with expenses. But every month is a struggle to get by.

The walls of the house are covered with photos of Anthea’s husband and two boys. They have all passed away now. But she takes comfort in her home.

## Every inch contains a memory. Every surface displays the treasures of her 78 years.

Before JFS, Anthea spent most of her time alone. Now, she has a team of people making sure she’s cared for.

We provided funding to repair the roof so Anthea could stay in her home, and Care Specialists stop by regularly to check in on her health and safety. We also engaged the help of a volunteer who keeps her company every week. On their first visit together, they made challah. It reminded Anthea of when she used to bake for her boys.

# "A Community is too Heavy to Carry Alone"

– Deuteronomy Rabbah 1:10





## Our Purpose

Jewish Family Service is a client-centered, impact-driven organization working to build a stronger, healthier, more resilient San Diego.

Since 1918

## Board of Directors

### Chair

Marie G. Raftery

### 1st Vice Chair

Adam Welland

### 2nd Vice Chair

Emily Jennewein

### Treasurer

Sheryl L. Rowling

### Secretary

Marcia Foster Hazan

### Directors

Jan Adler

Deborah Bucksbaum

Aaron Cohn

Sheldon Derezin

Theresa Dupuis

Kira Finkenberg

Susanna Flaster

Kate Kassar

Michael Lees

Dr. Jenny Meiselman

Gabrielle Oratz

Scott Schindler

Brad Slavin

Joel Smith

Rabbi Jonathan Stein

Karin Toronto

## Staff

### Chief Executive Officer

Michael Hopkins

### Chief Operating Officer

Dana Toppel

### Chief Financial Officer

Bernadette Griggs

### Chief Philanthropy Officer

Shana Hazan

Jewish Family Service of San Diego

JOAN & IRWIN JACOBS CAMPUS | Turk Family Center | 8804 Balboa Ave., San Diego, CA 92123 | (858) 637-3000 | [www.jfssd.org](http://www.jfssd.org)